

FLTRP Cup Training

Steven Johnson
University of Alaska

Introduction

- Introduction to American Parliamentary (AP) Debating
- From Philosophy to Practice

Topics

- Philosophy of Debate
- Structure
- Flowing
- Speaker Duties

Philosophy of Debate

- Debate is subjective
- No “right” way to debate
- Rules negotiated in the round

Pros and Cons

■ Cons

- ◆ Confusion
- ◆ Lack of Certainty
- ◆ Desire for rules

■ Pros

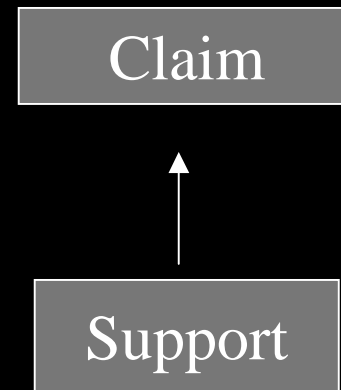
- ◆ Creativity
- ◆ Free Expression
- ◆ Safe to explore

Bottom Line:

Embrace the Uncertainty!

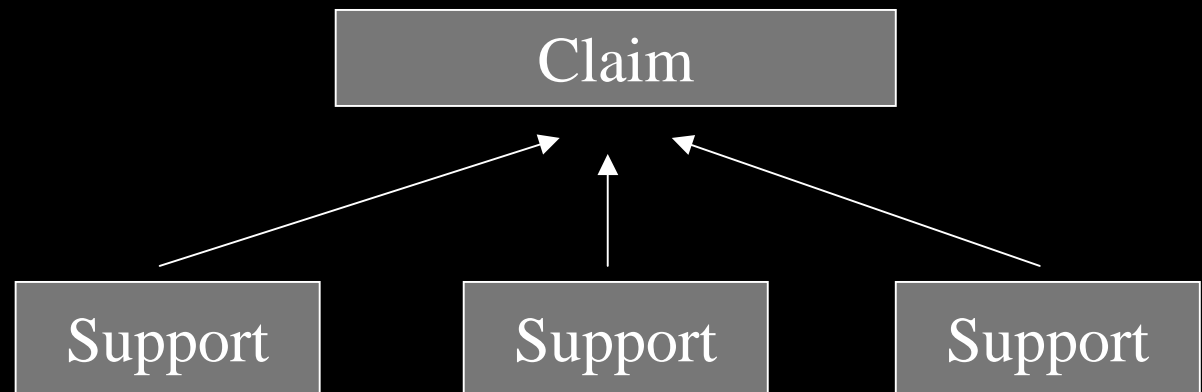
Structure

- Basic Argument



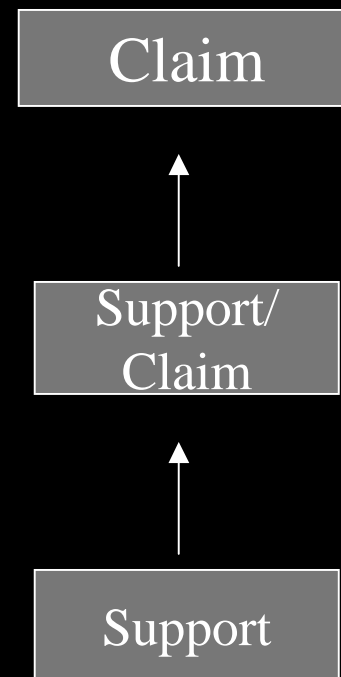
Structure

- Cluster Argument



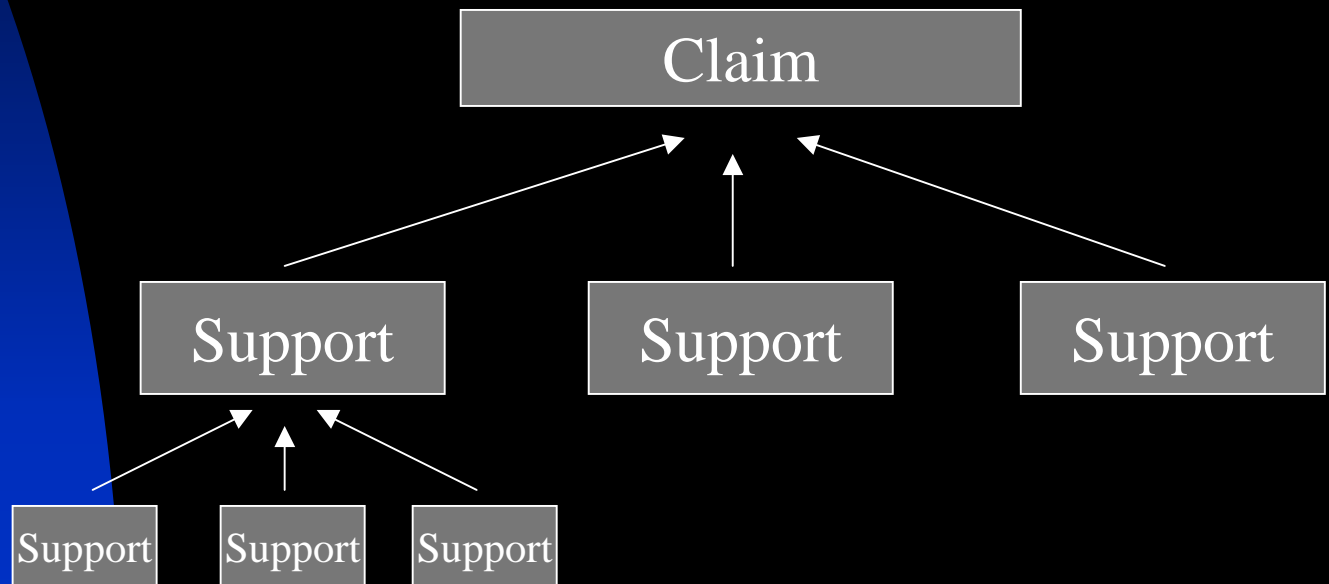
Structure

- Chain Argument



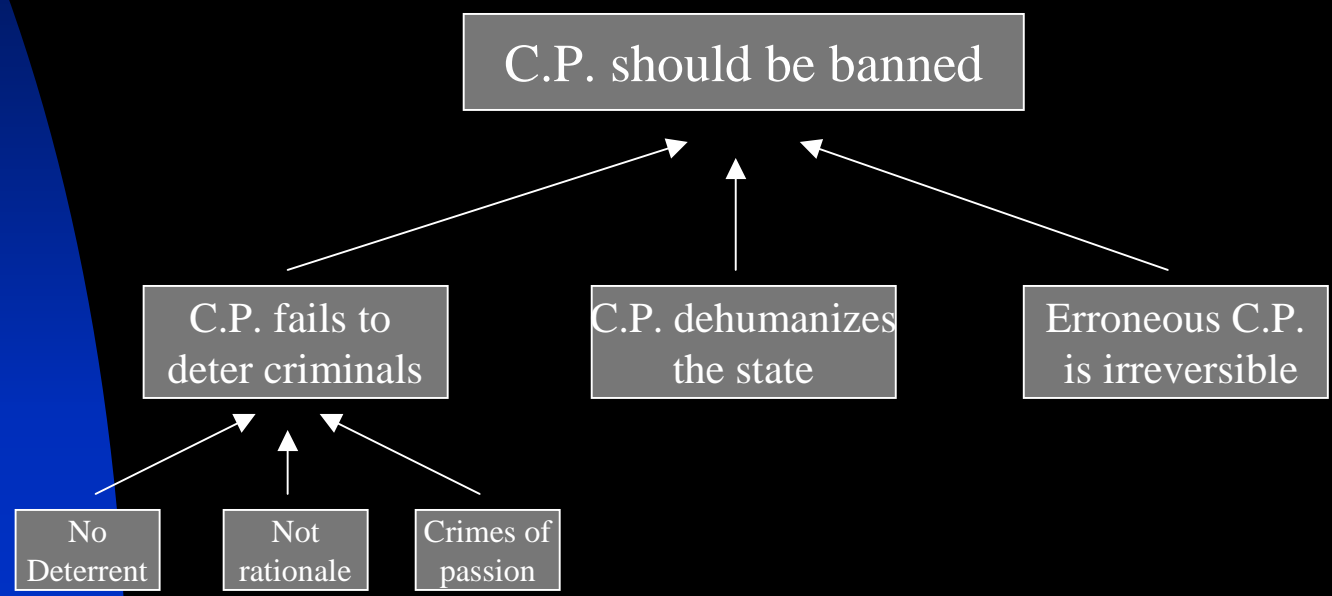
Structure

- Complex Argument



Structure

Complex Argument



Structure as Outline

Capital Punishment Should be Banned

1. Capital Punishment fails as a deterrent to crime
 - a. States with capital punishment show no decrease in crime rates
 - b. Criminals do not contemplate actions rationally
 - c. Most capital offenses are crimes of passion
2. Capital Punishment dehumanizes the state that practices it
3. Errors in the application of Capital Punishment are irreversible

Debate as a battle

- Psychological Ground
- Establishing & Defending Ground
- Capturing Ground
- The “Flow” as a map of the battleground

Flowing

- Divide paper into 6 columns
- Trace arguments as they develop across the flow
- Use abbreviations: CP, =, +, ^
- Four areas of territory:
 - ◆ Procedural
 - ◆ On-Case
 - ◆ Off-Case
 - ◆ Rebuttal

PMC

LOC

MGC

MOC

OR

GR

PROCEDURAL

ON - CASE

REBUTTAL

OFF - CASE

Procedural

- Definitions
 - ◆ For closed motions
 - ★ “This house would *ban capital punishment*”
 - ◆ For semi-closed motions
 - ★ “A *government* ought not benefit from the sins of its citizens.”
- Standard
 - ◆ Definition of the evaluative term
 - ★ “Paternalism is desirable”
 - ★ “Performance enhancing drugs ought to be tolerated in sport.”

Constructive

- Those arguments introduced, developed and defended by your team
- For Proposition: “On-Case”
- For Opposition: “Off-Case”
- Constructive efforts should be:
 - ◆ Complete (Claim and Support)
 - ◆ Varied (Diversified Support)
 - ◆ Relevant (Connects to Standard)

Deconstructive

- Those responses made to your opponents' arguments
- For Proposition: "Off-Case"
- For Opposition: "On-Case"
- Deconstructive approach:
 - ◆ 1. Restate
 - ◆ 2. Refute
 - ◆ 3. Replace

Speaker Duties

Constructive Speeches

- 7 min - Prime Minister Constructive
- 8 min - Leader Opposition Constructive
- 8 min - Member Government Constructive
- 8 min - Member Opposition Constructive

Rebuttal Speeches

- 4 min – Opposition Rebuttal
- 5 min – Government Rebuttal

Prime Minister (7 min)

- Procedural
 - ◆ Definitions
 - ◆ Standard
- Constructive

PMC	LOC	MGC	MOC	OR	GR
<p>PED: Permit:</p> <p>Standard: Good for Sport</p> <p>1. Other PE devices Embraced by sport</p> <p>2. Honors human Achievement</p> <p>3. Increases draw of Sport</p>					

Leader Opposition (8 min)

- Procedural
 - ◆ Definitions
 - ◆ Standard
- Deconstructive (on-case)
- Constructive (off-case)

PMC	LOC	MGC	MOC	OR	GR
<p>PED: Permit:</p> <p>Standard: Good for Sport</p> <p>1. Other PE devices Embraced by sport</p> <p>2. Honors human Achievement</p> <p>3. Increases draw of Sport</p>	<p>Measured by impact to athlete</p> <p>a. Other PE devices don't alter the body b. Other PD devices More easily monitored</p> <p>a. Not the individuals Achievement b. Deceives spectators</p> <p>a. Illusion and trickery b. Pushes athletes to go further and further</p>				

PMC	LOC	MGC	MOC	OR	GR
<p>PED: Permit:</p> <p>Standard: Good for Sport</p> <p>1. Other PE devices Embraced by sport</p> <p>2. Honors human Achievement</p> <p>3. Increases draw of Sport</p>	<p>Measured by impact to athlete</p> <p>a. Other PE devices don't alter the body b. Other PD devices More easily monitored</p> <p>a. Not the individuals Achievement b. Deceives spectators</p> <p>a. Illusion and trickery b. Pushes athletes to go further and further</p>				
	<p>A. Devalues compet. achievement</p> <p>B. Dangerous for athletes</p>				

Member Government (8 min)

- Procedural
 - ◆ Definitions
 - ◆ Standard
- Deconstructive (off-case)
- Constructive (on-case)

PMC	LOC	MGC	MOC	OR	GR
<p>PED: Permit:</p> <p>Standard: Good for Sport</p> <p>1. Other PE devices Embraced by sport</p> <p>2. Honors human Achievement</p> <p>3. Increases draw of Sport</p>	<p>Measured by impact to athlete</p> <p>a. Other PE devices don't alter the body b. Other PD devices More easily monitored</p> <p>a. Not the individuals Achievement b. Deceives spectators</p> <p>a. Illusion and trickery b. Pushes athletes to go further and further</p>	<p>Can measure both to athlete and sport</p>			
	<p>A. Devalues compet. achievement</p> <p>B. Dangerous for athletes</p>	<p>1. Honors all contributions 2. To disallow is arbitrary</p> <p>1. Personal autonomy 2. Motivation to be cautious</p>			

PMC	LOC	MGC	MOC	OR	GR
<p>PED: Permit:</p> <p>Standard: Good for Sport</p> <p>1. Other PE devices Embraced by sport</p> <p>2. Honors human Achievement</p> <p>3. Increases draw of Sport</p>	<p>Measured by impact to athlete</p> <p>a. Other PE devices don't alter the body b. Other PD devices More easily monitored</p> <p>a. Not the individuals Achievement b. Deceives spectators</p> <p>a. Illusion and trickery b. Pushes athletes to go further and further</p>	<p>Can measure both to athlete and sport</p> <p>1. All alter body performance 2. Irrelevant-no ban to monitor</p> <p>1. No achievement is Singular 2. Spectators want a show</p> <p>1. All sport is entertainment 2. Self actualization</p>			
	<p>A. Devalues compet. achievement</p> <p>B. Dangerous for athletes</p>	<p>1. Honors all contributions 2. To disallow is arbitrary</p> <p>1. Personal autonomy 2. Motivation to be cautious</p>			

Member Opposition (8 min)

- Procedural
 - ◆ Definitions
 - ◆ Standard
- Deconstructive (on-case)
- Constructive (off-case)

Rebuttal Speeches (Gov & Opp)

- Opp Rebuttal: 4 min
- Gov Rebuttal: 5 min

- Crystallize arguments
- Standard structure:
 - ◆ 1. Standard?
 - ◆ 2. They fail to meet
 - ◆ 3. We meet

PMC	LOC	MGC	MOC	OR	GR
<p>PED: Permit:</p> <p>Standard: Good for Sport</p> <p>1. Other PE devices Embraced by sport</p> <p>2. Honors human Achievement</p> <p>3. Increases draw of Sport</p>	<p>Measured by impact to athlete</p> <p>a. Other PE devices don't alter the body b. Other PD devices More easily monitored</p> <p>a. Not the individuals Achievement b. Deceives spectators</p> <p>a. Illusion and trickery b. Pushes athletes to go further and further</p>	<p>Can measure both to athlete and sport</p> <p>1. All alter body performance 2. Irrelevant-no ban to monitor</p> <p>1. No achievement is Singular 2. Spectators want a show</p> <p>1. All sport is entertainment 2. Self actualization</p>		<p>1. How should we determine whether or not to allow?</p> <p>PEDs should not be allowed if they have a detrimental effect on the athlete and, therefore, the sport</p> <p>2. Is there a benefit?</p> <p>a. Difference between PEDs and other PE b. Destroys achievement</p> <p>3. Are there harms?</p> <p>a. Pushes athletes to use more and more b. Dangerous to health c. Devalues honor of sport</p>	
	<p>A. Devalues compet. achievement</p> <p>B. Dangerous for athletes</p>	<p>1. Honors all contributions 2. To disallow is arbitrary</p> <p>1. Personal autonomy 2. Motivation to be cautious</p>			